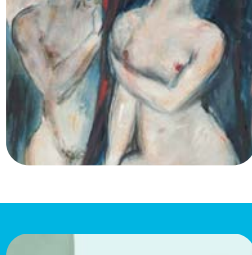
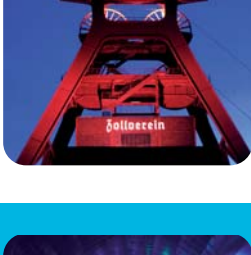


## HIGHLIGHTS

[www.grand-tour-2010.de](http://www.grand-tour-2010.de)



## A cultural year with plenty of highlights on Ruhr and Rhine

The year 2010 is an outstanding cultural year for North Rhine-Westphalia. Apart from countless attractive propositions and events in the European Capital of Culture RUHR.2010, the big cities on the Rhine offer important exhibitions and a colourful cultural programme. For lovers of art and culture from this country and abroad, the Rhine-Ruhr region is a top-class destination for cultural trips in 2010. Let yourself be captivated by the diversity of the Ruhr region, the traces of a transformation and the exciting cultural and artistic landscape of a fascinating region.

- See **great collections and exhibitions** at museums.
- Discover **changed places**, outstanding locations marked in a unique way by the structural transformation of the region.
- Take a walk or cycle through extraordinary **cultural sites** and enjoy the unique cultural and natural landscape that has developed over the last decades.

 The museums and institutions marked by this sign accept the **GRAND TOUR 2010 voucher**.

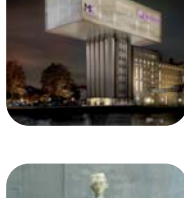
## Great collections and exhibitions

### DUISBURG

#### MKM Museum Küppersmühle – Museum of modern art

The MKM is a diversified modern art forum amidst a thriving cultural scene. With the Ströher collection, an international exhibition programme and its characteristic architecture, the MKM has been a cultural attraction ever since it was opened in Duisburg's inner harbour in April 1999. Completion of the extension building is scheduled for the end of 2010.

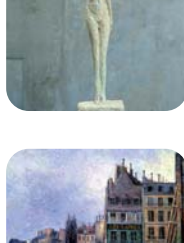
**Info:** Philosophenweg 55 | Tel. +49 (0)203/301948-11/-12  
[www.museum-kueppersmuehle.de](http://www.museum-kueppersmuehle.de)



#### Stiftung Wilhelm Lehbruck Museum – Centre of international sculpture

A visit to the Wilhelm Lehbruck Museum is like a walk through the history of modern sculptural art. The works of Duisburg sculptor Wilhelm Lehbruck (1881 – 1919) form the basis of an art collection that has developed over the decades to one of the world's most important international collections of modern sculpture. Exhibition tip 2010: Alberto Giacometti 'Woman with chariot – triumph and death' (31.01. – 18.04.)

**Info:** Friedrich-Wilhelm-Str. 40 | Tel. +49 (0)203/2833294 | [www.lehbruckmuseum.de](http://www.lehbruckmuseum.de)



### ESSEN

#### Museum Folkwang

Following its reopening, the Museum Folkwang presents in 2010/2011 the big special exhibitions: 'Das schönste Museum der Welt' – Museum Folkwang bis 1933 (The world's most beautiful museum. Museum Folkwang until 1933)(20.03. – 25.07.), 'A Star Is Born – Fotografie und Rock seit Elvis Presley' (Photography and rock since Elvis Presley) (02.07.– 10.10.) and 'Bilder einer Metropole. Die Impressionisten in Paris' (Pictures of a Metropolis. The Impressionists in Paris) (02.10.–30.01.2011). The museum's excellent collection is in itself worth a visit.

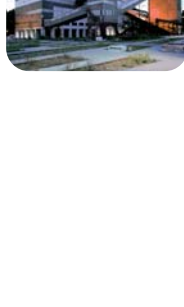
**Info:** Museumsplatz 1 | Tel. +49 (0)201/8845-444 | [www.museum-folkwang.de](http://www.museum-folkwang.de)



#### Ruhr Museum

From prehistory to the present: the newly opened Ruhr Museum tells the fascinating history of one of the world's biggest industrial regions, the Ruhr area, in a spectacular building: giant halls with Cyclop-like machines and long flights provide a very special experience of space. From February 12 to June 13, 2010 the Ruhr Museum presents the special exhibition 'Das Große Spiel – Archäologie und Politik zur Zeit des Kolonialismus (archaeology and politics in colonial times) (1860–1940). 'Alles wieder anders. Fotografien aus der Zeit des Strukturwandels' (photos from the time of structural change) (26.09.–16.02.2011) and 'Das schwarze Revier von Heinrich Hauser' (the black mining district of Heinrich Hauser)(26.09.–16.02.2011) are further exhibition projects.

**Info:** Zollverein A 14 | Schacht XII | Kohlenwäsche | Gelsenkirchener Str. 181  
Tel. +49 (0)201/8845200 | [www.ruhrmuseum.de](http://www.ruhrmuseum.de)



#### Ruhrblicke.

#### A photo project of the Sparkassen Finanzgruppe

What constitutes the Ruhr metropolis today, how has it changed, and where are interesting corners to be discovered? Eleven outstanding German photographers create new artistic documentary pictures especially for 'Ruhrblicke', which can be seen from 24.04. – 24.10.2010 at the SANAA building on the world heritage site Zollverein.

**Info:** [www.sparkasse.de/ruhr2010](http://www.sparkasse.de/ruhr2010)



### HERNE

#### LWL-Museum of Archaeology:

#### AufRuhr 1225! 27.02.–28.11.2010

The award-winning state museum invites its visitors to the fascinating world of archaeology. In the year of the capital of culture the house presents the special exhibition 'AufRuhr 1225!' – the biggest show about the Middle Ages that has ever been shown in the Ruhr area. From a portentous murder in 1225 to the last big battle of knights, the exhibition provides a lively presentation of medieval life in the region.

**Info:** Europaplatz 1 | Tel. +49 (0)2323/94628-0 [www.lw-landesmuseum-herne.de](http://www.lw-landesmuseum-herne.de)



### HATTINGEN

#### LWL-Industriemuseum Henrichshütte Hattingen:

#### HELDEN (Heroes) 12.03.–31.10.2010

Whether Hercules or Schimanski, the popular local TV cop, Jeanne d'Arc or Lara Croft – every time and culture has its heroes and heroines. They are made, adored, celebrated and overthrown. This is the theme of the exhibition 'HELDEN. Von der Sehnsucht nach dem Besonderen' (Heroes. HELDEN. Von der Sehnsucht nach dem Besonderen), presented at the Industriemuseum Henrichshütte Hattingen.

**Info:** Werksstr. 31-33 | Tel. +49 (0)2324/9247-142 | [www.helden-ausstellung.de](http://www.helden-ausstellung.de)



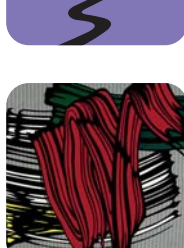
### DÜSSELDORF

#### Quadriennale 2010

September 2010 – January 2011

Quadriennale 2010 – the big festival of visual art in Düsseldorf starts into a new round in September 2010. 'kunstgegenwärtig' – under this title nine exhibition houses will present high-class exhibitions. Beuys, Byars, Broodthaers, Paik as well as surprising new names corroborate once again Düsseldorf's undimmed charisma as international art city.

**Further information at** [www.quadriennale-duesseldorf.de](http://www.quadriennale-duesseldorf.de)



### KÖLN

#### Museum Ludwig

The Museum Ludwig in Cologne ranks amongst Germany's most illustrious museums. The collection of classical and contemporary art is one of the country's important art treasures. The collections of German expressionism, Russian avant-garde, the world's third largest Picasso collection, and the most comprehensive pop-art collection outside the USA are of outstanding quality.

**Info:** Heinrich-Böll-Platz 1 | Tel. +49 (0)221/22126165 | [www.museum-ludwig.de](http://www.museum-ludwig.de)



### BONN

#### Kunst- und Ausstellungshalle der Bundesrepublik Deutschland

The Kunst- und Ausstellungshalle der Bundesrepublik Deutschland is a museum of international impact. Since 1992 it has been showing renowned exhibitions on topics of art, cultural history and science. Exhibition tip 2010: Byzantium: 'Splendour and Everyday Life' (26.02. – 13.06.), Afghanistan 'Surviving Treasures' (11.06. – 03.10.) and Thomas Schütte (15.07. – 01.11.)

**Info:** Friedrich-Ebert-Allee 4 (Museumsmeile) | Tel. +49 (0)228/9171-0  
[www.bundeskunsthalle.de](http://www.bundeskunsthalle.de)



## Changed Places

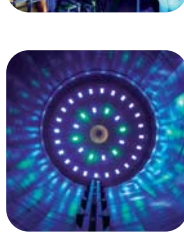
### DUISBURG

#### Landschaftspark Duisburg-Nord

This landscape park with an industrial character has been created at the disused iron works of the Thyssen Company and demonstrates the structural changes in the Ruhr area like few other places. Different guided theme tours provide a lively experience of industrial history and industrial culture beyond the traditional museum.

**Info:** Besencherstr. 71 | Tel. +49 (0)203/4291942 | [www.landschaftspark.de](http://www.landschaftspark.de)

**Free entry**



### OBERHAUSEN

#### Gasometer Oberhausen

A relic from the former industrial landscape, the gasometer rises 117m high and probably is today Europe's most extraordinary exhibition hall. Spectacular projects such as 'The Wall' by Christo and Jeanne-Claude made the gasometer one of the Ruhr areas most famous symbols nationwide. The current exhibition 'Out of this World' already has had record attendances.

**Info:** Arenastr. 11 | Tel. +49 (0)208/8503730 | [www.gasometer.de](http://www.gasometer.de)



### ESSEN

#### World Heritage Site Zollverein colliery and coking plant

Having started its operations in 1932 as the world's most efficient colliery, its architecture rooted in the style of 'new objectivity', the plant has become an industrial monument of international ranking and a lively cultural location. Europe's former biggest coking plant on a neighbouring site is today a venue for live art.

**Info:** Besucherzentrum Ruhr, Kohlenwäsche, Schacht XII (A14)  
Gelsenkirchener Str. 181 | Tel. +49 (0)201/246810 | [www.zollverein.de](http://www.zollverein.de)

**The voucher entitles you to free entry to the Museum Ostwall**



### BOCHUM

#### Deutsches Bergbau-Museum

The world's biggest mining museum provides an exciting insight into mining operations all over the world by means of original machinery and numerous functional models. Following descent into a demonstration mine, a ride to the viewing platform of the shaft tower at 62 m height is recommended: this special 'technical monument' affords a magnificent view of the heart of the Ruhr area.

**Info:** Am Bergbaumuseum 28 | Tel. +49 (0)234/58770 | [www.bergbaumuseum.de](http://www.bergbaumuseum.de)



### DORTMUND

#### Dortmunder U-Turm – Centre of 21st century culture

The tower of the Dortmund Union brewery has become the city's landmark. The brewery's former production and storage house has been turned into a spectacular creative centre in the context of RUHR.2010. It houses different art and cultural institutions and shows the collection of the Museum Ostwall in new surroundings. As from autumn 2010.

**Info:** DORTMUNDtourismus | Tel. +49 (0)231/18999222  
[www.dortmund-tourismus.de](http://www.dortmund-tourismus.de)



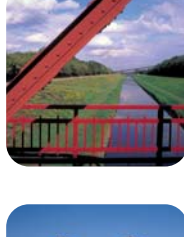
**The voucher entitles you to free entry to the Museum Ostwall**

# Art Landscapes

## EMSCHERKUNST.2010 – An island for art

The biggest art project of the capital of culture will be opened at the end of May 2010. For 100 days, a total of eight exhibition rooms on the Emscher island can be explored. 40 artists will present works of all genres in an extraordinary setting, amongst which a sunken garden in a former sedimentation tank. Many projects invite to joining in and getting creative.  
**Info:** [www.emscherkunst.de](http://www.emscherkunst.de)

**The voucher entitles to rental of a bicycle at the information centre Nordsternpark for a tour around the island**

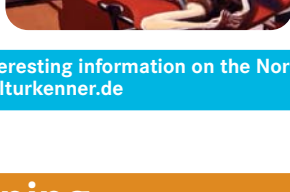
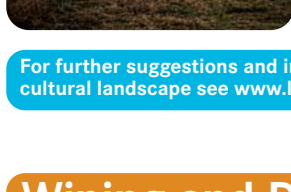


## Museumsinsel Hombroich

'Art in parallel to nature', the leitmotif of Paul Cézanne, was rarely translated more successfully than on Hombroich museum island. In the midst of a beautiful landscape of meadows and terraces, ten small museum buildings seem to be interwoven with nature and enable exciting art dialogues. The adjoining NATO rocket base is today an artists' village. Hangars and watchtowers have been renovated and turned into studios and workshops for artists.

**Info:** [www.inselhombroich.de](http://www.inselhombroich.de) | Minkel 2 | Tel. +49 (0)2182/2094

**Info:** [www.inselhombroich.de](http://www.inselhombroich.de) | Minkel 2 | Tel. +49 (0)2182/2094



**For further suggestions and interesting information on the North Rhine-Westphalian cultural landscape see [www.kulturkenner.de](http://www.kulturkenner.de)**

## Wining and Dining

### DUISBURG

#### Duisburg inner harbour

A regular culinary mile features all kinds of pubs, bars, cafés and restaurants by the waterside.

**Info:** [www.innenhafen-portal.de](http://www.innenhafen-portal.de)



#### Hauptschalthaus im Landschaftspark Duisburg Nord

The bistro-restaurant at the old main distribution centre of the former smelting works serves regional and international cuisine.

**Info:** Emscherstr. 71 | Tel. +49 (0)203/41799180 | [www.landschaftspark.de](http://www.landschaftspark.de)

**Tip:** visit at night when the industrial plants are illuminated.



### OBERHAUSEN

#### Frintrop

Inn with a 100 years old tradition serving fine food and hearty local dishes.

**Info:** Mühlenstr. 116 | Tel. +49 (0)208/870975 | [www.restaurant-frintrop.de](http://www.restaurant-frintrop.de)



### ESSEN

#### Casino Zollverein

A former machine shop right in the middle of Zollverein world heritage site houses one of Essen's best restaurants. Sophisticated, but committed to its origins.

**Info:** Gelsenkirchner Str. 181 | Tel. +49 (0)201/830240 | [www.casino-zollverein.de](http://www.casino-zollverein.de)



#### Hannappel

From the former corner pub to the top restaurant – one of the best in the Ruhr region.

**Info:** Dahlhauser Str. 173 | Tel. +49 (0)201/534506 | [www.restaurant-hannappel.de](http://www.restaurant-hannappel.de)

### BOCHUM

#### Livingroom

450 square meters in size, it is Bochum's biggest living room right in the city centre. Modern ambience and international cuisine of an extra class.

**Info:** Luisenstr. 9-13 | Tel. +49 (0)234/9536585 | [www.livingroom-bochum.de](http://www.livingroom-bochum.de)

#### Die Uhle

In the heart of Bochum's city centre this restaurant receives its patrons with a quaint atmosphere, 150 years of culinary tradition and a wide choice of good plain food and seasonal specialities.

**Info:** Huestr. 24 | Tel. +49 (0)234/12453



### HAGEN

#### Schlossrestaurant Hohenlimburg

The rustic restaurant at the former horse barn is well known for its venison specialities.

**Info:** Alter Schlossweg 30 | Tel. +49 (0)233/2056

[www.schloss-restaurant-hohenlimburg.de](http://www.schloss-restaurant-hohenlimburg.de)



### DORTMUND

#### Hövels Hausbrauerei

Long tradition and good quality of beer and food. Wide choice – from brunch to brewery tour.

**Info:** Hoher Wall 5-7 | Tel. +49 (0)231/9145470 | [www.hoevels-hausbrauerei.de](http://www.hoevels-hausbrauerei.de)



### DÜSSELDORF

#### MedienHafen gastronomic mile

A trendy district with a wide choice of excellent restaurants, cafés, pubs and much outdoor gastronomy with a harbour view and a fascinating architectural panorama.

**Info:** [www.gastronomie.duesseldorf-tourismus.de](http://www.gastronomie.duesseldorf-tourismus.de)



#### Hummerstübchen

Star chef Peter Nöthel makes no secret of his passion for the fresh top products he serves his guests daily.

**Info:** Bonifatiusstr. 35 | Tel. +49 (0)211/594402 | [www.hummerstuebchen.de](http://www.hummerstuebchen.de)



### KÖLN

#### Le Moissonnier

The finest French cuisine with select ingredients – an unforgettable treat in a discreet art nouveau atmosphere.

**Info:** Krefelder Str. 25 | Tel. +49 (0)221/729479 | [www.lemoissonnier.de](http://www.lemoissonnier.de)



#### Ein Kölsch im Brauhaus

A Kölsch beer is a must when visiting Cologne! This typical top-brewed beer is best tried at one of the quaint brewery houses.

**Tips:** Brauhaus Sion | Unter Taschenmacher 5-7 | Tel. +49 (0)221/2578540

[www.brauhaus-sion.de](http://www.brauhaus-sion.de)

Brauhaus Früh am Dom | Am Hof 12-14 | Tel. +49 (0)221/2613211

[www.früh.de](http://www.früh.de)



### BONN

#### Halbedel's Gasthaus

One of Bonn's finest addresses for years. Opulent ambience in an art nouveau building. Expect the best ingredients, freshly cooked in new, creative variations.

**Info:** Rheinallee 47 | Tel. +49 (0)228/354253 | [www.halbedels-gasthaus.de](http://www.halbedels-gasthaus.de)



**For more recommendations see also [www.portal.ruhrmenue.de](http://www.portal.ruhrmenue.de) and the sites of the different cities' tourism organisations.**

## At Night

### METROPOLE RUHR

#### Ruhrtriennale

**Gisela oder: die merk- und denkwürdigen wege des glücks**

**Premiere 25.09.2010**

Musical theatre by Hans Werner Henze for and with youngsters, machine hall at Zweckel colliery, Gladbeck.

**Info:** [www.ruhrtriennale.de](http://www.ruhrtriennale.de)



### DUISBURG / DÜSSELDORF

#### Deutsche Oper am Rhein

One of Germany's biggest opera houses with a large repertoire from baroque opera to the famous classics of opera literature and 20th century works.

**Info:** Heinrich-Heine-Allee 16a | Tel. +49 (0)211/8925211 | [www.rheinoper.de](http://www.rheinoper.de)



### ESSEN

#### Philharmonie Essen

Certainly one of Germany's most beautiful concert halls. A versatile stage for international artists and orchestras. Numerous excellent highlights are scheduled for the cultural year 2010.

**Info:** Huyssenallee 53 | 45128 Essen | Tel. +49 (0)201/812-2200

[www.philharmonie-essen.de](http://www.philharmonie-essen.de)



### BOCHUM

#### Schauspielhaus Bochum

One of the Ruhr region's most important playhouses. Throughout its 90 years of existence, many nationally and internationally famous actors stood on its stage.

**Info:** Königsallee 15 | 44789 Bochum | Tel. +49 (0)234/3333-5555

[www.schauspielhausbochum.de](http://www.schauspielhausbochum.de)



### DORTMUND

#### Konzerthaus Dortmund – Philharmonie für Westfalen

This outstanding concert hall was opened in 2002 and has been keeping a very high artistic standard ever since. In 2010 it presents again famous international orchestras and soloists.

**Info:** Brückenstr. 21 | 44135 Dortmund | Tel. +49 (0)231/2269-6210

[www.konzerthaus-dortmund.de](http://www.konzerthaus-dortmund.de)



### DÜSSELDORF

#### Düsseldorfer Schauspielhaus

One of Germany's most important playhouses showing plays ranging from antiquity to the present. Fascinating productions of the classics projected into the present and numerous premieres make for the special quality of this theatre.

**Info:** Gustaf-Gründgens-Platz 1 | Tel. +49 (0)211/369911

[www.duesseldorfer-schauspielhaus.de](http://www.duesseldorfer-schauspielhaus.de)



### KÖLN

#### Kölner Philharmonie

Without a doubt one of the leading German concert halls. In the direct vicinity of Cologne cathedral, it features a diversified programme with the grand works of symphony and chamber music, jazz sessions as well as folk and pop events.

**Info:** Tel. +49 (0)221/280280 | [www.koelner-philharmonie.de](http://www.koelner-philharmonie.de)



### BONN

#### Oper Bonn

With its excellent international ensemble and outstanding programme, Bonn opera house fascinates its visitors again and again.

**Info:** Am Boeselagerhof 1 | Tel. +49 (0)228/778000 | [www.theater-bonn.de](http://www.theater-bonn.de)



**A comprehensive programme overview of the events in the year of the capital of culture is available at: [www.ruhr2010.de/events](http://www.ruhr2010.de/events)**



#### Central contact

Art Cities Services GmbH

Riesstraße 10

53113 Bonn

Tel. +49 (0)228/184967-44

[info@art-cities-box.de](mailto:info@art-cities-box.de)

[www.art-cities-box.de](http://www.art-cities-box.de)



#### Information before your trip

[www.ruhr2010.de](http://www.ruhr2010.de)

[www.ruhr-tourismus.de](http://www.ruhr-tourismus.de)

[www.nrw-tourismus.de](http://www.nrw-tourismus.de)

#### Picture credits

P. 1: Kunst- und Ausstellungshalle der Bundesrepublik Deutschland, Peter Oszvald // © Id Ruhr, EMG, Peter Wieler // Wilhelm Lehmbruck, Bathseba, 1913 © Stiftung Wilhelm Lehmbruck Museum, Duisburg. P. 2: Paul Cézanne, Der Steinbruch Bibémus, um 1895 © Museum Folkwang // Gasometer Oberhausen, Joachim Schumacher // „Fußgängerbrücke“, Tobias Rehberger. P. 3: Herzog & de Meuron // Stiftung Museum Lehmbruck, Alberto Giacometti, Frau auf dem Wagen, Britta Lauer // Maximilien Luce, Der Durchbruch der Rue Réaumur, 1896, Privatbesitz, © VG Bildkunst, Bonn, 2009. P. 4: Kohlenwäsche mit Kokskohlenbunker © Ruhr Museum, Brigida González // LWL-Museum für Archäologie, M. Göhre. P. 5: „Helden von Bern“, Nachlass Sepp Herberger © Stadtarchiv Weinheim // Nam June Paik, Fish Flies on Sky, 1983-85, museum kunst palast, Düsseldorf Sammlung Moderne Kunst © Nam June Paik Estate, New York, 2009 // Roy Lichtenstein, Großes Gemälde Nr. 6, 1965, Kunstsammlung Nordrhein Westfalen © VG Bild-Kunst Bonn, 2009. P. 6: Kunst- und Ausstellungshalle der Bundesrepublik Deutschland, Peter Oszvald // Gasometer Oberhausen, Joachim Schumacher. P. 7: Stiftung Zollverein, Ralph Lueger // Deutsches Bergbau-Museum // Stadt Dortmund, Dortmund-Agentur. P. 8: Museumsinsel Hombroich, Tomas Riehle // Monica Bonvicini, SATISFY ME // Norbert Tadeusz, Rote Liege. P. 9: Presse- und Kommunikationsamt der Stadt Duisburg, Uwe Köppen // Frintrop, Oberhausen // Casino Zollverein, Essen. P. 10: Hövels Brauerei, Dortmund. P. 11: DMT Bildarchiv Public. P. 12: Deutsche Oper am Rhein, Duisburg // Philharmonie Essen // Schauspielhaus Bochum © Stadt Dortmund // Dortmund-Agentur. P. 13: Konzerthaus Dortmund // Ulrich Otte, DMT // Presseamt der Stadt Bonn. P. 14: Tomas Riehle // Eingang zum Besucherzentrum Ruhr in der ehemaligen Kohlenwäsche auf Zeche Zollverein, Manfred Vollmer.

#### Edition notice

Concept: projekt2508

Kultur- und Tourismusmarketing GmbH

Graphics: Grafik Design Bock + Partner

Print: Welzel & Hardt GmbH

#### Note

The choice of hotels and restaurants was made exclusively by projekt2508 GmbH. More interesting tips and recommendations for your trip can be obtained from the respective cities' tourism organisations.

A project of RUHR.2010 sponsored by the state of North Rhine-Westphalia.



Der Ministerpräsident des Landes Nordrhein-Westfalen

